

Hole Spin Qubit in Ge Hut Wire

TAM talk - Florian Froning – 24.05.2018

Ge Hole Spin Qubit

Hannes Watzinger¹, Josip Kukucka¹, Lada Vukusic¹, Fei Gao², Ting Wang²,
Friedrich Schäffler³, Jian-Jun Zhang², and Georgios Katsaros¹

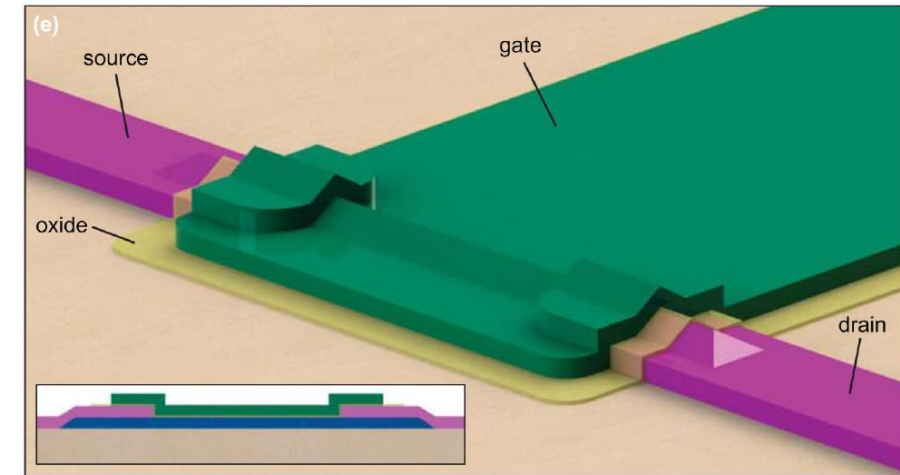
¹Institute of Science and Technology Austria, Am Campus 1, 3400 Klosterneuburg, Austria

²National Laboratory for Condensed Matter Physics and Institute of Physics, Chinese Academy of Sciences, Beijing 100190, China

³Johannes Kepler University, Institute of Semiconductor and Solid State Physics, Altenbergerstr. 69, 4040 Linz, Austria

arXiv:1802.00395

11.04.2018



Watzinger *et al.*, Nano Lett. 16, 6879 (2016)

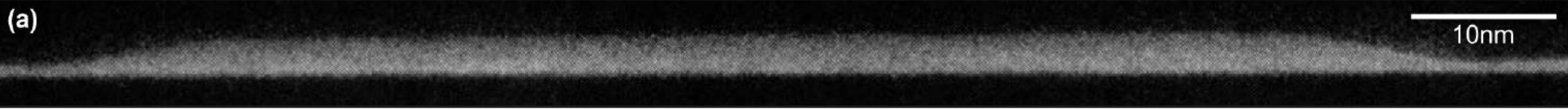
- electrically controlled and scalable qubits
- intrinsically strong (and tunable) spin-orbit interaction of holes
 - especially in Germanium/Silicon nanowires
- long spin lifetime and dephasing time (reduced contact hyperfine interaction)
 - due to large HH-LH splitting even longer than in cylindrical nanowires
- study on nature of heavy-hole states in Ge hut wires^[2]
- study on spin states in quantum dots in Ge hut wires^[3]

[1] C. Kloeffel, D. Loss, *Annu. Rev. Condens. Matter Phys.* **4**, 51 (2013)

[2] Watzinger *et al.*, *Nano Lett.* **16**, 6879 (2016)

[3] Li *et al.*, *APL* **110**, 133105 (2017)

Growth



- Stranski-Krastanow growth of Ge on Si buffer layer
 - 3-5 nm thick cap of Si to prevent oxidation
- length 1 μm , triangular cross section
- only [100] and [010] crystal direction

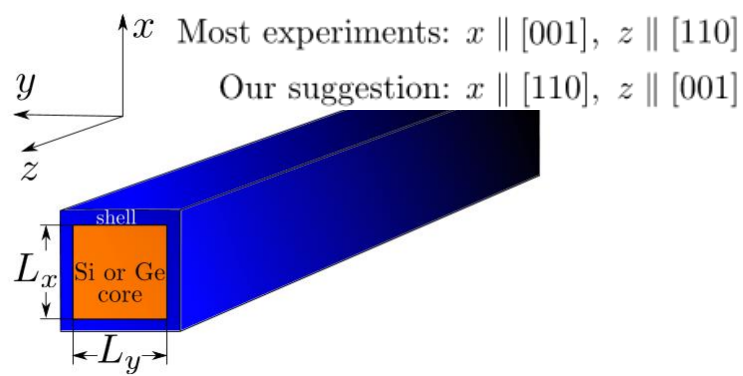


Fig: Theory^[4]

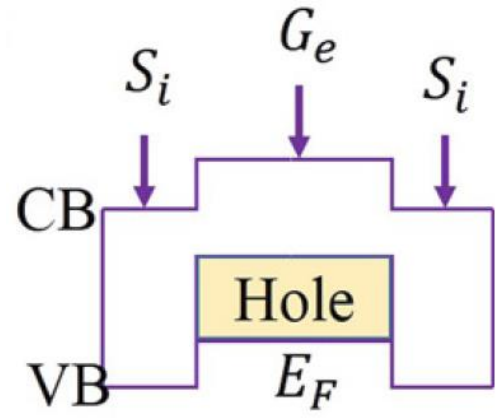


Fig: schematic band structure of the hut wire^[3]

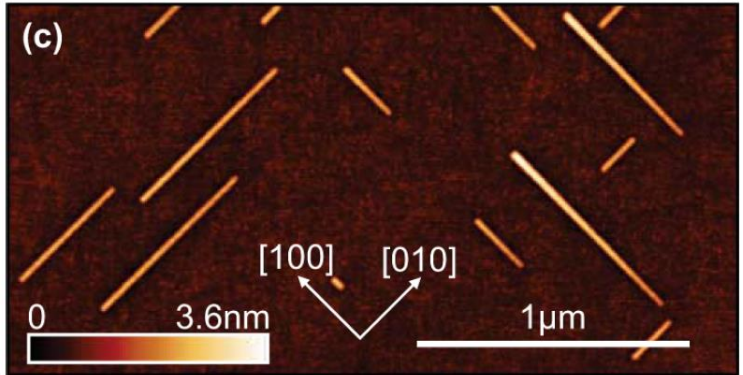
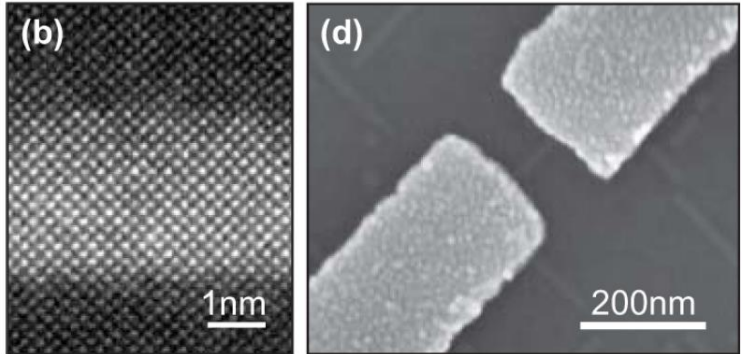
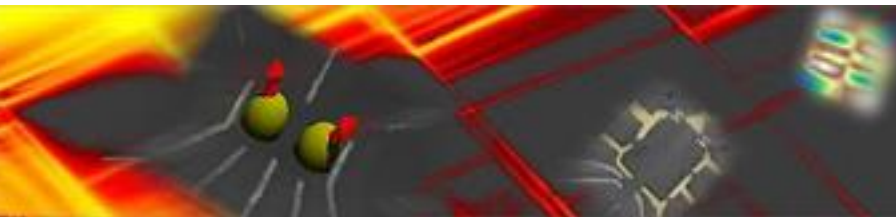


Fig: STEM and AFM images^[2]



[1] Zhang *et al.*, PRL **109**, 085502 (2012)
 [2] Watzinger *et al.*, Nano Lett. **16**, 6879 (2016)
 [3] Li *et al.*, APL **110**, 133105 (2017)

[4] Kloeffel *et al.*, arXiv:1712.03476v1
 [5] Watzinger *et al.*, APL **2**, 076102 (2014)

EDSR spectroscopy

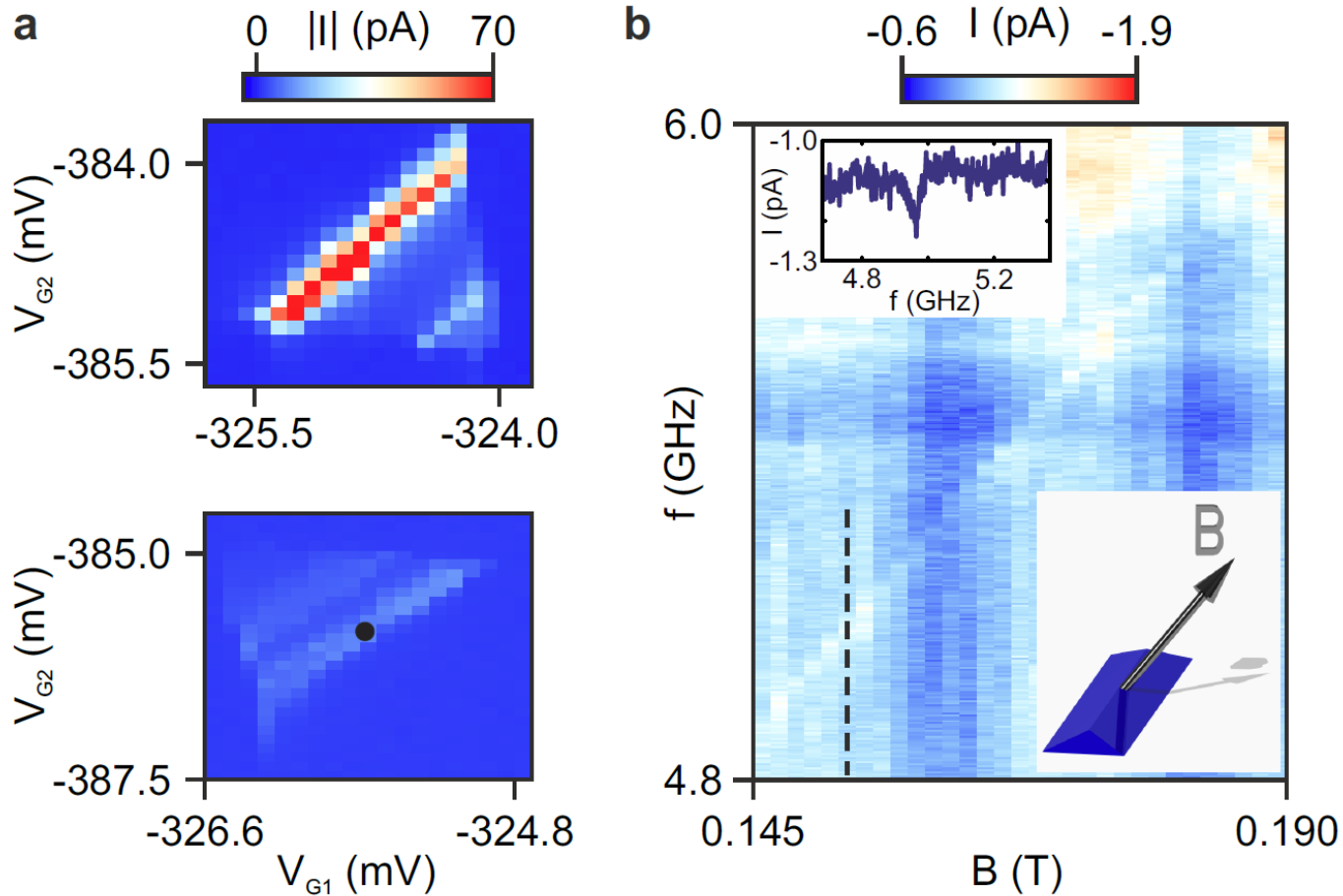


Fig: (a) Bias triangles show Pauli spin blockade
 (b) Zero detuning current as function of drive frequency and magnetic field^[1]

- resonance condition

$$f_{\text{drive}} = f_{\text{Larmor}} = g\mu_B B/h$$
- strong g-factor anisotropy

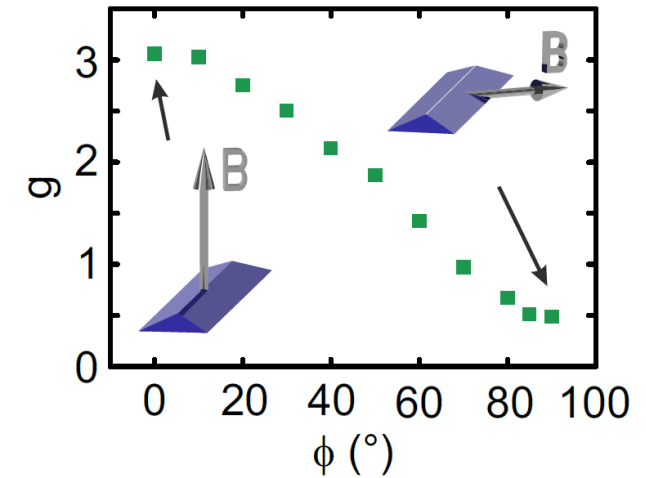
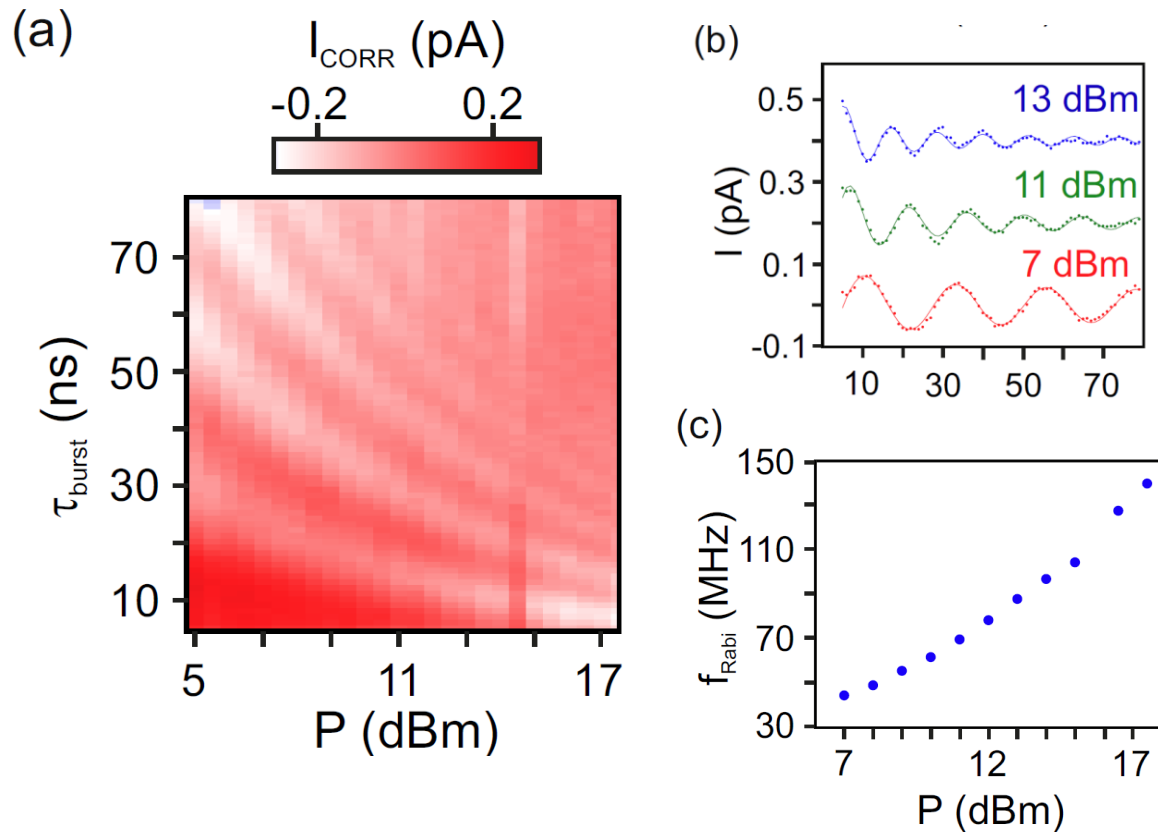


Fig: g-factor anisotropy^[1].
 ϕ : angle between [100] and B-field

[1] Watzinger *et al.*, arXiv:1802.00395v2

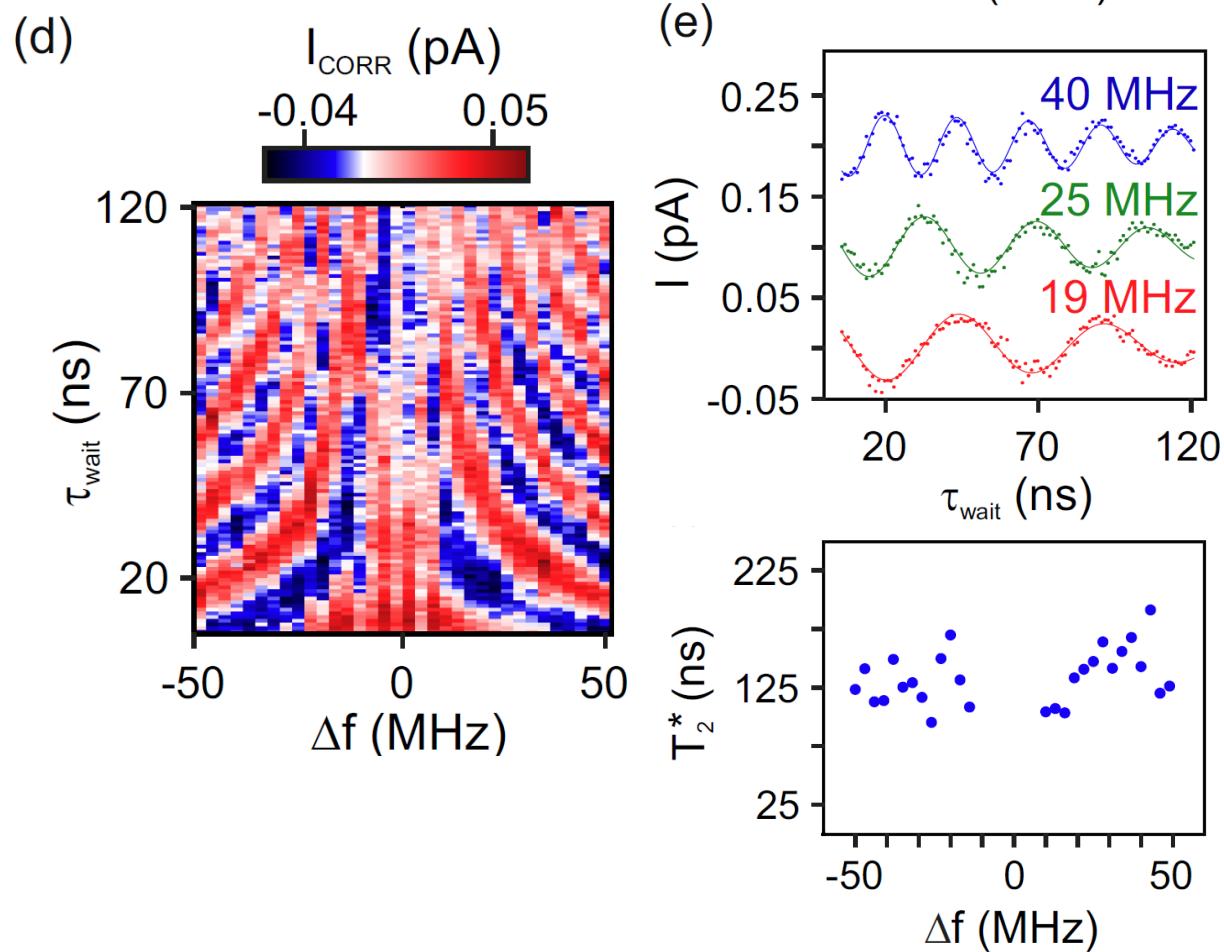
Coherent Rabi Oscillations



- initialize in triplet state
- apply microwave burst of duration τ_{burst} in Coulomb blockade
- spin readout in spin blockade region
- Rabi frequency up to 140 MHz

Fig: Rabi oscillations ($B = 127$ mT, $f_{\text{drive}} = 5.96555$ GHz)^[1]

[1] Watzinger *et al.*, arXiv:1802.00395v2

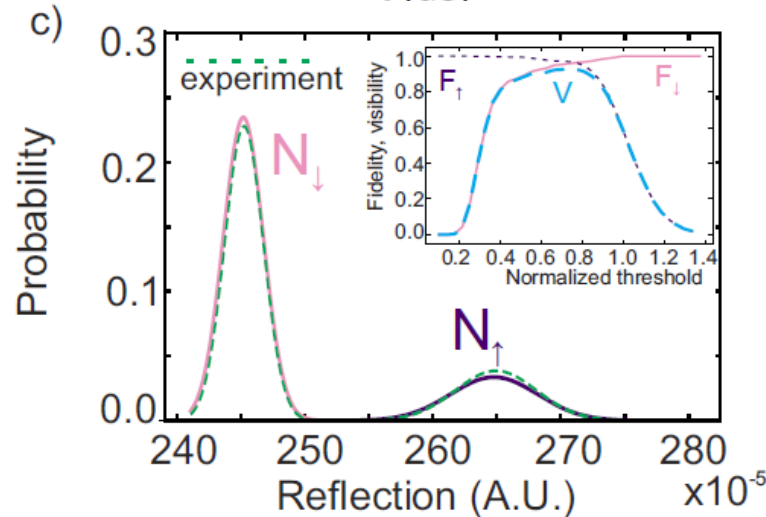
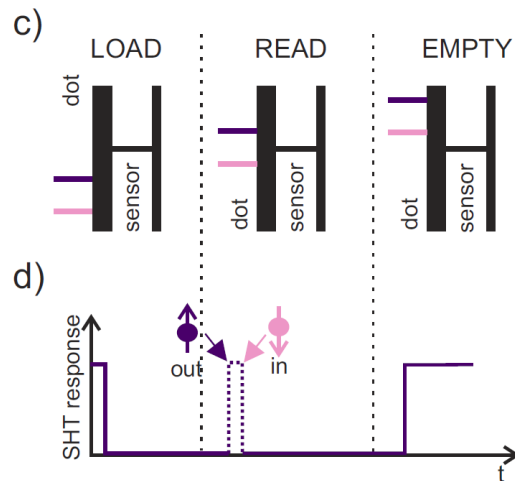
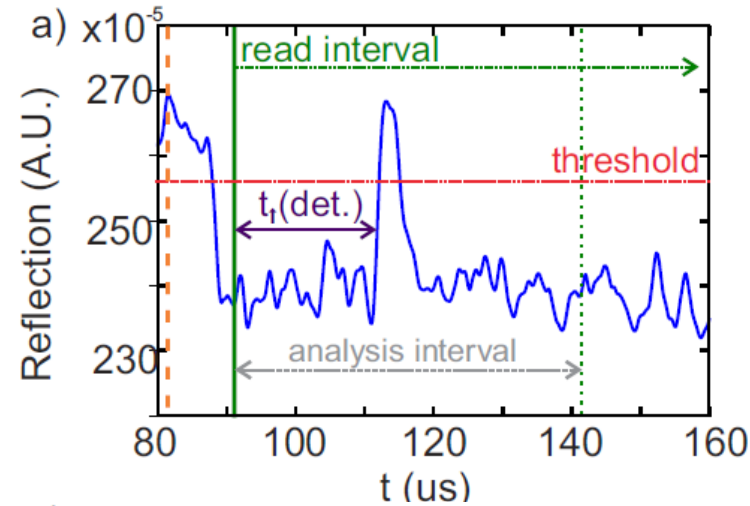
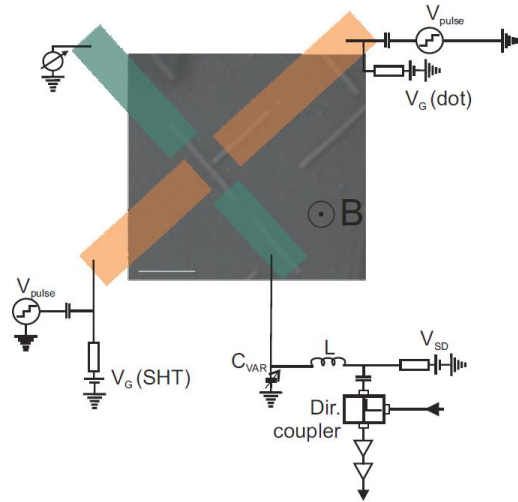


- apply two $\frac{\pi}{2}$ pulses with delay τ_{wait}
- average $T_2^* \approx 130$ ns

Fig: Ramsey fringes ($P_{\text{RF}} = 11$ dBm, $B = 127$ mT, $f_{\text{drive}} = 5.96555$ GHz)^[1]

[1] Watzinger *et al.*, arXiv:1802.00395v2

Single Shot Readout

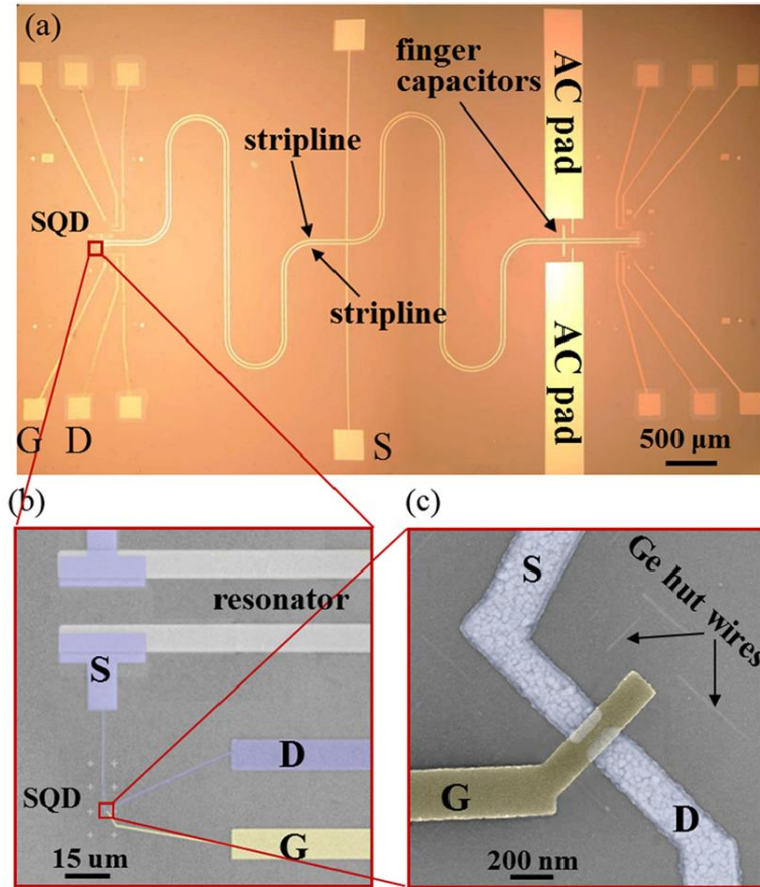


- three stage pulsing sequence for spin to charge conversion
- fidelities:
 - spin-down: 0.832 ± 0.005
 - spin-up: 0.923 ± 0.008
 - charge readout: 93 %
- probably limited by T_1
 - $88 \pm 5 \mu\text{s}$ at 500 mT
 - $32 \pm 2 \mu\text{s}$ at 1100 mT

[1] Vukušić *et al.*, arXiv:1803:01775v2

[2] Vukušić *et al.*, Nano Lett. **17**, 5706 (2017)

Coupling to Superconducting Resonator



- $\frac{\lambda}{2}$ alumina resonator
 - 5.972 GHz
 - quality factor 810
 - $\frac{\kappa}{2\pi} = 7.37$ MHz
- $\frac{\gamma}{2\pi} = 6$ MHz
- hole resonator coupling $\frac{g_c}{2\pi} = 148$ MHz
- spin-resonator coupling $\frac{g_s}{2\pi} = 2-4$ MHz

Fig: Resonator with integrated quantum dot devices^[1]

[1] Li *et al.*, Nano Lett. 18, 2091 (2018)

Summary and Outlook

- Ge hut wire: CMOS compatible platform, isotopic purification, strong SOI
- electric dipole spin resonance in double quantum dot
 - Rabi frequency 140 MHz
- Ramsey experiments: $T_2^* \approx 130$ ns

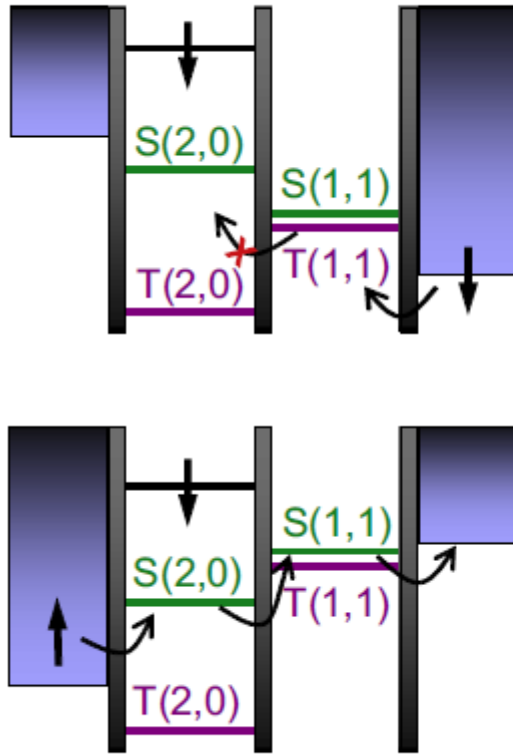
- Single shot readout
- coupling to microwave resonator

- strong spin-resonator coupling?
- long-range coupling and spin entanglement?

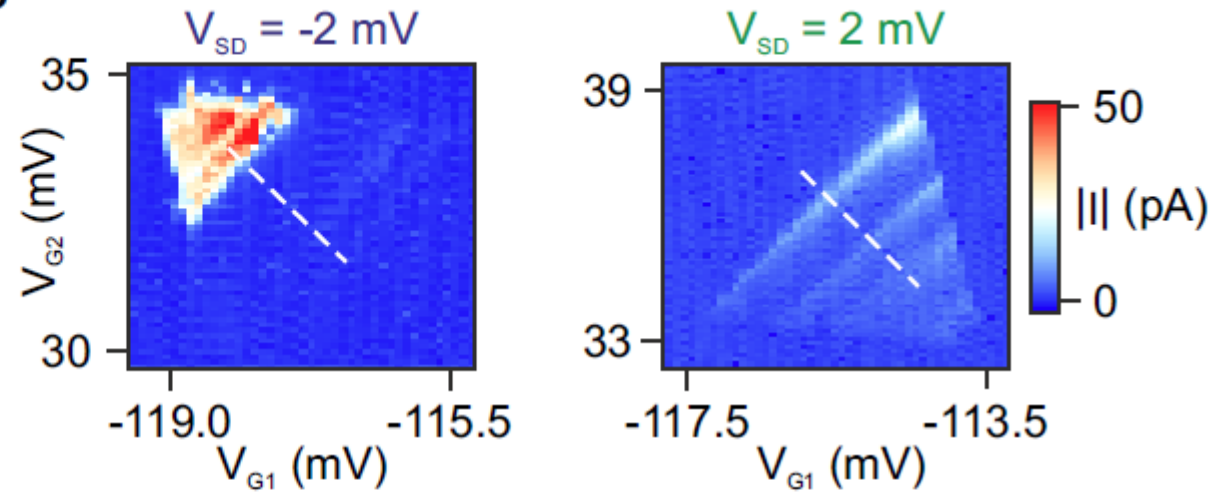


Pauli Spin Blockade

a



b



c

